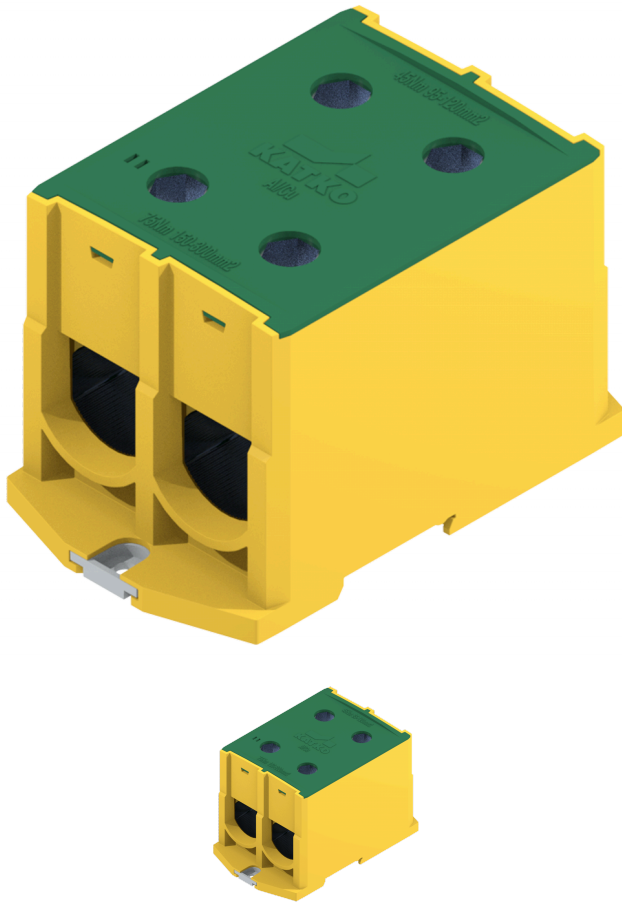


KL2X300PE

Terminal Blocks



- **UL listed connectors, see link below**
- Bi-metal terminal suitable for Al (KL terminals) / Cu (KL and KC terminals) cables
- Available in grey, blue (N) yellow/green (PE), red (P) and black (M)
- 50 and 95 mm² connectors also available as 1-pole branching connector (3x) and 3-pole connector (3x1x)
- 1000 VAC and 1500 VDC
- Touchproof, IP20
- KC-terminals and KL1X16 models for DIN-rail mounting, refer to detailed product specifications
- KL-terminals (excl. KL1X16 models) for DIN-rail or base mounting, refer to detailed product specifications
- Housing and cover in polyamide
- Terminal material KL tin-coated, greased aluminium
- Terminal material KC steel and brass
- Environmentally friendly materials
- Durable laser markings
- Sales unit = 1 piece

Data subject to change without notice. Always confirm the data is correct from the seller.

Certificates:

- KL range: Certified according to IEC 61238-1 Class A
- KL range: Certified according to IEC 60947-7-1

Accessories:

- **KLTS50 – 300** terminal shrouds available

Related materials:

Connector catalogue >>

Conductors per cross section (mm²) table >>

UL 1059 listed Terminal Blocks >>



Product details

SKU	KL2X300PE
Al mm²	95 - 300
Color	PE
Cu mm²	95 - 300
E-Number	1942127
EAN	6419410378823
In (Al) (A)	800
In (Cu) (A)	1040
Key size	Hex 12
Mounting	Screw / DIN
Number of Conductors	4
Package size	6
Torque Al/Cu (Nm)	45 (95-120 mm ²) / 75 (150-300 mm ²)
Un (V)	1000
Weight (lb/kg)	1.986 / 0.901

Dimensional drawing

